

# Luther benches

## Art at the Leisnig church square

### Author

is the artist Rosi Steinbach, Leipzig

### The artistic philosophy & idea

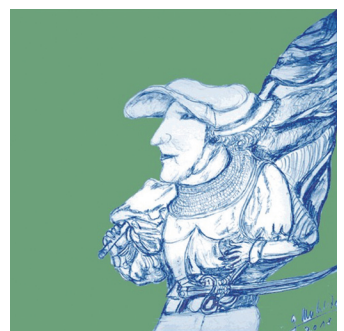
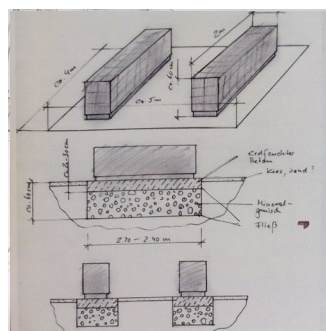
Through images, we can comprehend social, political and religious problems and changes in Luther times. Themed tile paintings become such a projection surface, installed on two cubes – two works of art that can be used as benches where people can rest and contemplate the Lutheran era.

### The creative process integrating the socialised art approach

Members of the ceramics group at Künstlergut Prästitz and Naunhof made drawings of Lutheran fashion, utensils and symbols: the clothing worn by the different social classes – peasants, clergy, bourgeoisie, aristocracy – differences between before and after the Reformation, and transferred the motifs to ceramic tiles. This project gave them a sense of the spirit of that age.



The two works of art were created in a collaborative process.







Stadt Leisnig



The elaborately crafted benches located on a square opening to Kirchstraße and Schulweg offer a wonderful view of the Lutheran countryside. Visitors can let their minds wander...

Material: Ceramic tiles, Core is concrete

Dimensions: 2 benches – 160 cm wide,  
40 cm deep and 60 cm high

