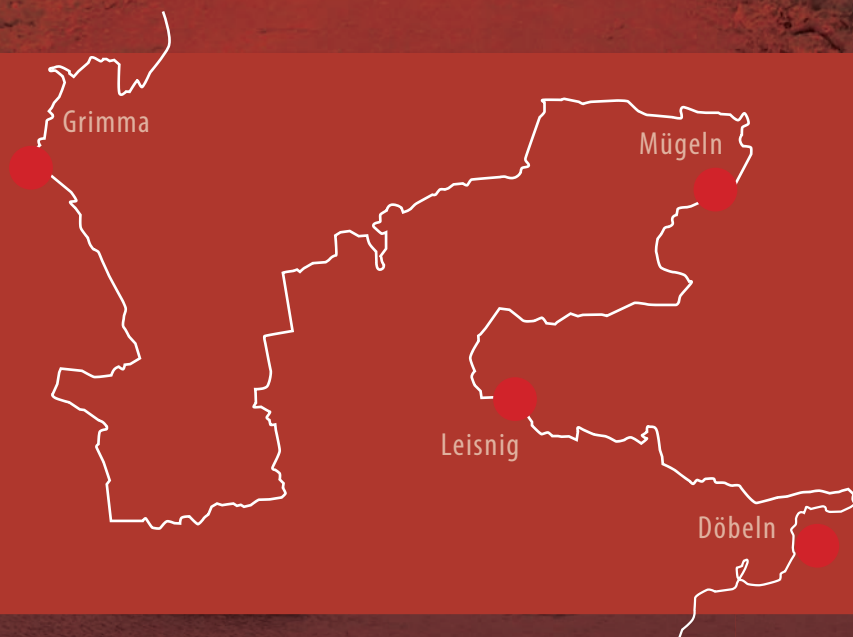


# REFORMATION & ART

## ART PROJECTS ON THE LUTHER TRAIL



Four works of art adorn the Luther Trail in the Muldentale district. On the stretch from Nimbschen Abbey to Schadelmühle, one finds "Epiphytes – Writings" at five points; the sculpture "Die jungen Frauen" (The Young Women) stands in front of the Marienthal Abbey in Sorzig by Mügeln; in Leisnig's old town, "Luther benches" provide welcome respite, and at the "Kleine Teiche" (Little Ponds) in Ziegra by Döbeln, the sculpture "Globus/Sphären" (Globe/Spheres) greets hikers.



Since 2014, the cultural promotion association Kulturförderverein Schadelmühle e.V. has been collaborating with several partners to realise this project. Twenty-four designs were submitted; after a two-stage evaluation process, four of them were selected and now enrich the Luther Trail in Muldentale district.



KULTURFÖRDERVEREIN  
SCHADELMÜHLE e.V.



# REFORMATION & ART

## ART PROJECTS ON THE LUTHER TRAIL

Spanning around 500 km, the "Luther Trail in Saxony" connects sites of historical significance for the Reformation and for Martin Luther. For the trail sections between Grimma, Mügeln, Leisnig and Döbeln, four works of art were created as part of the project "REFORMATION & ART" that reflect this theme. For the citizens of these towns, the landmarks are to become a place where they meet.

The project ties the touristic aspects of the Luther Trail in Saxony to philosophies of the Reformation and regional, cultural and social influences of the Reformation to the present day.

At the same time, deficits in the visual arts are counteracted and a valuable contribution is made to "culture on the Luther Trail". Involving a variety of institutions in the project strengthens identity with the region.

Local and regional activities are united here under the concept of "socialised art". Whether cultural heritage associations or schools, everyone was invited to participate in the creation of these works of art.

The four works of art chosen in a two-stage selection process by a jury consisting of artists, members of the associations Kulturförderverein Schaddelmühle e.V. and Künstlergut Prösitz e.V., the town councils, the Evangelist Church, the Leipziger Land administrative district, and funding bodies were created at the two art centres with active involvement of citizens. Art centre representatives structured, guided, and contributed to the process with their own additional activities. They organised citizen participation in the creative work.

What's innovative about this project is the unique opportunity for citizens to experience the entire process leading to the creation of a work of art first-hand and to participate directly (socialised art).

Predominantly young, talented people were involved in the detailed planning of the objects and the actual creative work. The works of art thus emerged as the fruit of collaboration between artists and enthusiastic citizens.

Project sponsor: Kulturförderverein Schaddelmühle e.V. (see right page for contact info)

Project partners: the municipalities Grimma, Leisnig, Mügeln, Döbeln, Künstlergut Prösitz,  
various schools (near the art centres),  
educational institutions of the Evangelist Church in Saxony

The project is a part of LES, the action field "Partnerships".





**KULTURFÖRDERVEREIN  
SCHADDELMÜHLE e.V.**

Künstlerhaus Schaddelmühle  
Zur Schaddelmühle 5  
04668 Großbothen/OT Schaddel  
Germany  
Tel.: 034384-71202  
verein@schaddelmuehle.org  
www.schaddelmuehle.org  
Geoportal:  
www.drehscheibe-keramik.org



The cultural promotion association Kulturförderverein Schaddelmühle e.V. is a rural cultural centre for the visual arts, a meeting and work place for creative artists, laymen, work groups and much more. It was founded in 1991 and is located in a former watermill south of Grimma.

A spacious and well-equipped workshop accommodates even the highest professional demands. The studios provide best conditions for large-scale, elaborate sculptures – during the process of creation and firing. Aspiring artists can receive professional, supportive instruction in courses. Artist workshops, work days with school classes, pottery classes for kids and teens, holiday offers and much more are greatly popular at Schaddelmühle.

Art courses, changing exhibitions, readings and other events top off the cultural program.

The Kulturförderverein Schaddelmühle e.V. is a member of the national geopark "Porphyryland Steinreich in Sachsen e.V." and, in a renovated transformer station, a historic monument, it presents the geoportal "Earthen elements of ceramics".



An interesting selection of industrially produced ceramics, the monumental ceramic relief "Essen, Trinken, Feiern" (Eat, Drink, Celebrate) salvaged from the party hall of the industrial laundry company Geithain, the outdoor sculpture park and much more are on exhibit at the geoportal "Earthen elements of ceramics" and at the Künstlerhaus Schaddelmühle for interested visitors.





# Epiphytes for the Luther Trail

## 5 works of art between Nimbschen Abbey and Schaddelmühle

### The authors

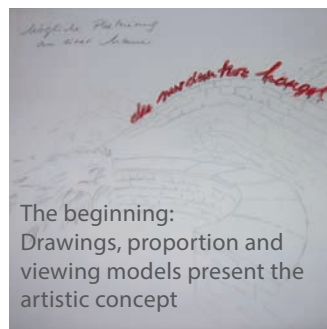
are the artists Juliane Köhler (right), Großbothen/Hannover and Kerstin Schaefer, Stuttgart.

### The artistic philosophy & idea

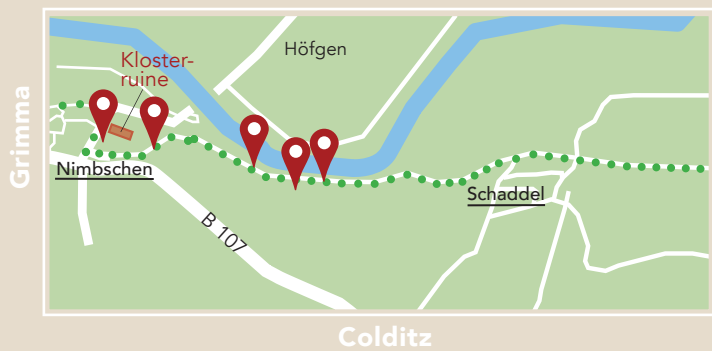
is the installation of various written Luther quotes at five locations along the trail between Nimbschen and Schaddel. One by one, hikers can discover them on the trail and explore their own worlds of thought inspired by the place and Luther's words.

### The creative process integrating the socialised art approach

A central aspect of the artistic concept was to actively involve young people in all key stages of the project. Vocational school students with migrant backgrounds and grammar school students participated. The artists involved the participants in the process in a democratic manner, intervening when necessary to ensure high artistic quality.







Stadt Grimma



The quotes written on non-corrosive metal are found at, on and inside of various objects and surfaces (tree, bench, wall, ground) where they are firmly anchored.

Material: Sheet metal, bricks for seating  
Letters made of metal

Dimensions: Letter height: 25 cm





# Luther benches

## Art at the Leisnig church square

### Author

is the artist Rosi Steinbach, Leipzig

### The artistic philosophy & idea

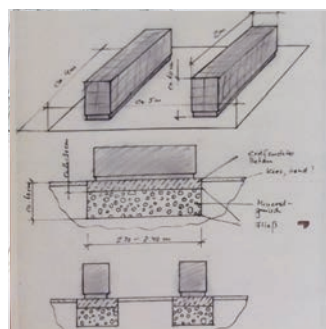
Through images, we can comprehend social, political and religious problems and changes in Luther times. Themed tile paintings become such a projection surface, installed on two cubes – two works of art that can be used as benches where people can rest and contemplate the Lutheran era.

### The creative process integrating the socialised art approach

Members of the ceramics group at Künstlergut Prästitz and Naunhof made drawings of Lutheran fashion, utensils and symbols: the clothing worn by the different social classes – peasants, clergy, bourgeoisie, aristocracy – differences between before and after the Reformation, and transferred the motifs to ceramic tiles. This project gave them a sense of the spirit of that age.



The two works of art were created in a collaborative process.







Stadt Leisnig



The elaborately crafted benches located on a square opening to Kirchstraße and Schulweg offer a wonderful view of the Lutheran countryside. Visitors can let their minds wander...

Material: Ceramic tiles, Core is concrete

Dimensions: 2 benches – 160 cm wide,  
40 cm deep and 60 cm high





# Die jungen Frauen

## Glass art object at the entrance of the Marienthal Sornzig Abbey

### Author

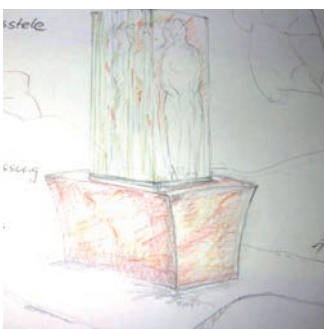
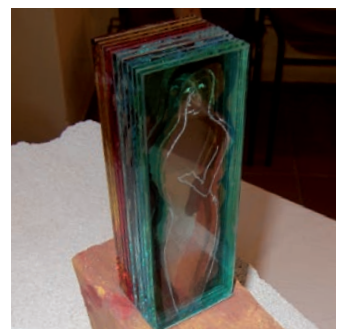
is the artist E. Andreas Hartzsch, Riesa

### The artistic philosophy & idea

The glass object at the abbey's entrance commemorates the young, brave women who had to flee their convents in dramatic circumstances to an uncertain future. A monolithic glass block on a base is designed in layers. At the front and back, embedded silhouettes of women can be seen. As one moves, the views change with fascinating spatial shifts in the coloured glass block.

### The creative process integrating the socialised art approach

The concept for the flight of the nuns from Sornzig Abbey as part of the Reformation era was developed in a collaborative effort with grammar school students from Oschatz and Riesa. The silhouettes were drawn and the transfer to glass was practiced.



Drawings, proportion and viewing models aided visualisation of the idea







Stadt Mügeln



Material: Glass block,  
Base made of Rochlitz porphyry  
Dimensions: Total height 1.74 m



# Globe / spheres

## Sculpture art at the “Kleine Teiche” Ziegra

### Author

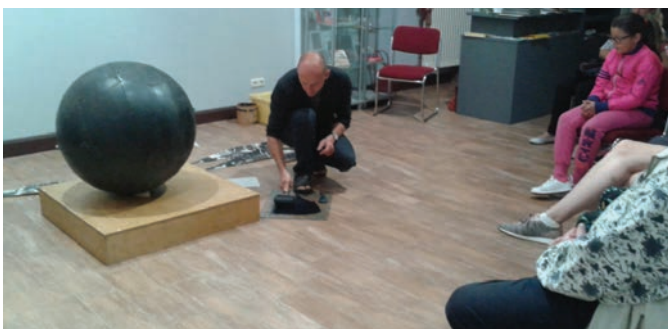
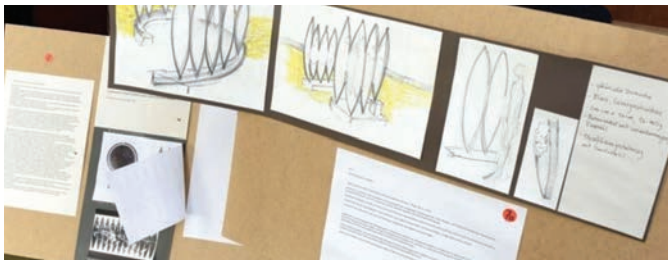
is the artist Stefan Knechtel, Altenburg

### The artistic philosophy & idea

The globe is one of the most important inventions of the pre-Reformation era. For the first time, it captured the new understanding of the world, the establishment of which was an important driving force of the Reformation movement. The artist chose to create a work with 9 of 12 spherical lunes that formed a globe when brought together. What is broken open, the dispersion of individual elements that seem to belong together forces people to think in a new way and to depart from the beaten track – an analogy to 500 years ago.

### The creative process integrating the socialised art approach

At a workshop in Döbeln, the relationship between the sphere and the surface was explored in a collaborative effort. The intentionally interactive process dynamics between the two-dimensional surface and the three-dimensional object was the key aspect of this analysis. The artist also presented his work and the planned work of art in an exhibition in the “Small Gallery” of the town hall.







The artistic, laser-cut structures on the Corten-steel surfaces will be changed by the weather over time.

Material: Iron, laser-cut  
Concrete base with anchoring,  
stainless steel

Dimensions: 200 cm x 50 cm, 9 parts

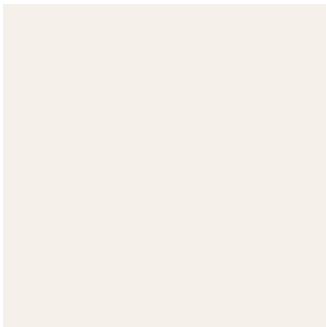






KÜNSTLERGUT PRÖSITZ

Künstlergut Prösitz  
Prösitz 1  
04668 Grimma  
Germany  
Tel.: 03 43 85/51 315  
Fax: 03 43 85/52 447  
kuenstlergut@gmail.com  
www.kuenstlergut-proesitz.de



Künstlergut Prösitz pursues a mission that is unique in Germany and perhaps in the world by offering young sculptors with children work and exhibition opportunities.

This involves a variety of complex functional, social and financial challenges:

- Efforts to obtain artist grants (in the form of scholarships during the annual symposia, on an EU level as well)
- Social assistance, e.g. childcare during the symposia and other work trips
- Art instruction in public and private institutions (courses)
- Art exhibitions in Saxony and all over Germany, e.g. "Fellows"
- Plenairs for immigrants from all over the world
- Partnerships with other cultural institutions:  
State associations VIA REGIA and Bildende Kunst Sachsen
- Close collaboration with the Employment Office, Kulturräum Leipziger Land, Administrative District Office, Förderverein Künstlergut, AG Künstlerhäuser Sachsen and many more



- Use and conservation of a landmarked three-sided farmyard in Central Saxony as a living and work space; the Julius-H.-W.-Kraft Award
- Studios with flexible usage – from paper work to heavy sculptures (up to 3t) and various materials, such as metal, stone, clay, wood, cement and more.
- VIA REGIA cultural route
- Realisation of works of art in public spaces

